

**AGENDA FOR THE REGULAR MEETING OF
THE COUNCIL OF THE TOWN OF ONOWAY
HELD ON THURSDAY, NOVEMBER 26th, 2020 AT 10:00 A.M. - VIRTUAL**

1. CALL TO ORDER

2. ADOPTION OF AGENDA

- as is, or with additions or deletions

3. ADOPTION OF MINUTES – n/a

4. APPOINTMENTS/PUBLIC HEARINGS n/a

5. FINANCIAL REPORTS – n/a

6. POLICIES & BYLAWS – n/a

7. ACTION ITEMS

- Pg 1-9
- a) Covid-19 Discussion – due to the November 24 provincial announcements with respect to further pandemic restrictions, as well as the November 25 meeting with municipal leaders within Lac Ste. Anne County boundaries, further discussion on whether Town Council wishes to further consider a mandatory face covering bylaw. Mayerthorpe passed a temporary face covering bylaw last night, Lac Ste. Anne County will be considering same this morning, Alberta Beach is not considering same at this time. The Summer Villages for the most part, do not have facilities within their boundaries that are accessible to the public. Draft Mayerthorpe and County bylaws are attached (and were previously forwarded to Council), the bylaw Mayerthorpe passed last night is a combination of the two and we will be sent a copy later today. Last week Council reviewed the survey which was received which at that time showed the respondents were pretty evenly split on their thoughts of a bylaw, and then Council also received a unofficial petition from 15 business owners who are opposed to a bylaw. The County has taken the lead on preparing a joint news release from all communities within their boundaries who choose to be part of it. I would like to put forward discussion on a potential positive reinforcement campaign in Town. Further discussion to take place at meeting time. *(direction as given by Council at meeting time)*

The Onoway Facility Enhancement Association is asking for Council's input on whether they should proceed with their December 12 x-mas fair (*direction as given by Council at meeting time*)

- b) Onoway Regional Medical Clinic – further to previous discussions and yesterday's ORMC meeting, the following is being brought back to Council for consideration:

- Pg 10-11
- physician incentive
 - improvements from Town parking lot across back alley
 - paving of County parking lot
 - new medical clinic sign (is now requested for just summer villages)
 - Town assistance with snow removal of sidewalk

(*direction as given by Council at meeting time*)

- c) Community Profile – further to previous discussions, attached is a draft of our community profile. This is a project that the communities who were members of GROWTH had done. Onoway was not a member of GROWTH but as Lac Ste Anne County had this profile done for them through GROWTH it came up at an economic partnership meeting that Onoway should get one done. Some of the information that is in here is from the County's profile, and it probably is good to share those business outside Onoway boundaries as this is a document to attract business to Onoway & Area – but I am concerned about how we decide where that invisible line is. And I am concerned how we mention some of our businesses within Onoway and not all. Maybe we name all that have business licenses at the end, and just high light certain ones. I don't know, slippery slope. The consultant who prepared this will call into our meeting tomorrow to review with us and they can answer those questions and we can give them direction. This is a work in progress project and this document will be as good as the information and insight we give the consultant. (*direction as given by Council at meeting time*)
- Pg 12-32

- d) Plans for the JOE in 2020/2021 – Deputy Mayor Lynne Tonita to lead discussion on this matter at meeting time (*direction as given by Council at meeting time*)

e)

f)

g)

8. COUNCIL, COMMITTEE & STAFF REPORTS

- a) Mayor's Report
- b) Deputy Mayor's Report
- c) Councillor's Reports (x 3)
- d) CAO Report
 - meeting with MLA Getson – proposed dates and discussion items
- e) Public Works Report

9. INFORMATION ITEMS - n/a

10. CLOSED SESSION – n/a

11. ADJOURNMENT

12. UPCOMING EVENTS:

- December 3, 2020 – Regular Council Meeting 9:30 a.m.
- December 17, 2020 – Regular Council Meeting 9:30 a.m.
- January 7, 2021 – Regular Council Meeting 9:30 a.m.
- January 21, 2021 – Regular Council Meeting 9:30 a.m.

Town of Mayerthorpe
Province of Alberta
Canada

BYLAW NO. 1127

A BYLAW OF THE TOWN OF MAYERTHORPE TO TEMPORARILY MANDATE THE WEARING OF FACE COVERINGS IN SPECIFIED PLACES

WHEREAS the World Health Organization, the Chief Public Health Officer for Canada and the Chief Medical Officer of Health for Alberta have identified face coverings as an important component of a public health strategy to reduce the risk of transmission of the COVID-19 virus;

AND WHEREAS pursuant to section 7 of the *Municipal Government Act* a municipality may pass bylaws respecting:

- a. The safety, health and welfare of people and the protection of people and property;
- b. People, activities and things in, on or near a public place or place that is open to the public; and
- c. Businesses, business activities and persons engaged in business.

NOW THEREFORE, the Council of the Town of Mayerthorpe in the Province of Alberta, duly assembled, hereby enacts as follows:

TITLE

1. This Bylaw may be referred to as the "Face Coverings Bylaw".

DEFINITIONS

2. In this Bylaw:
 - a. "Act" means the *Municipal Government Act*.
 - b. "Town" means the Town of Mayerthorpe.
 - c. "Civic Facility" means an indoor space open to the public, within a building that is owned or leased by the Town in which services or amenities to the public are provided by the Town in all or part of the building, regardless of whether the indoor space is occupied by the Town or by another party.

- d. "Face Covering" means a medical or non-medical mask or other face covering that fully covers the nose, mouth and chin;
- e. "Peace Officer" means a peace officer as defined in the *Peace Officer Act* and also includes a bylaw enforcement officer as defined in and appointed under the authority of Bylaw No. 922 the Mayerthorpe Bylaw Officer Bylaw, and the police officer as defined in the Police Act;
- f. "Public Place" means an indoor space open to the public by right or by express or implied invitation regardless of who owns or occupies the indoor space, and includes the area occupied by the driver and passengers in a Taxi cab as defined in Business License Bylaw No. 610 and any amendments thereto;
- g. "Violation Ticket" has the meaning defined in the *Provincial Offenses Procedure Act*.

FACE COVERING REQUIREMENTS AND EXCEPTIONS

- 3. A person must wear a Face Covering at all times while in a Civic Facility or a Public Place.
- 4. A person charged with an offence under Section 3 of this bylaw shall not be found guilty if the person establishes that at the time of the offence they were:
 - a. Under the age of 10;
 - b. Unable to place, use or remove a Face Covering without assistance;
 - c. Engaged in services that required the temporary removal of their Face Covering;
 - d. Consuming food or drink while seated in a designated food and drink seating area, or as part of a religious or spiritual ceremony;
 - e. Engaged in swimming or other water activities, or engaged in physical exercise or other physical activity, within an area designated for such activities;
 - f. Providing or receiving care or assistance for a mental or physical condition, disability or limitation and a Face Covering would have hindered providing or receiving that caregiving or assistance.
 - g. A participant in a dance, theatrical or musical public performance, if all participants in the performance maintained at least 2 metres of physical

distance from each other and did not enter the area where the public was viewing the performance; or

- 4.1 No person shall in any manner harass or attempt to intimidate a person who is not guilty of an offence while not wearing a Face Covering as a result of any provision of Section 4.

ENFORCEMENT

5. A person who contravenes a provision of this bylaw is guilty of an offence.
6. Where an offence is of a continuing nature, a contravention of a provision of this bylaw constitutes a separate offence with respect to each day, or part of a day, is liable to a fine in an amount not less than that established by this bylaw for each such separate offence.

FINES AND PENALTIES

7. A person who is guilty of an offence under this bylaw is liable to:
- a. A fine in the amount of \$100.00; or
 - b. Upon summary convictions, in the discretion of the court a fine not exceeding \$10,000.00 or a period of imprisonment of not more than one year, or both.

MUNICIPAL VIOLATION TAG

8. A Peace Officer may issue, with respect to an offence under this bylaw, a municipal violation tag specifying the fine amount established under subsection 7.a of this bylaw as the amount payable.
9. Where a municipal violation tag is issued the amount payable may be paid in accordance with the instructions on the tag, and if paid a Violation Ticket shall not be issued for the offence.

VIOLATION TICKET

10. A Peace Officer may issue, with respect to an offence under this bylaw, a Violation Ticket:
- a. Specifying the amount set out in subsection 7(a) of this bylaw as the fine for the offence; or

- b. Requiring an appearance in court without specifying a fine amount and without the option of making a voluntary payment.

11. Where a Violation Ticket specifies a fine amount, a voluntary payment equal to the specified fine amount may be made as directed on the Violation Ticket.

SEVERABILITY

12. Should any provision of this bylaw be found to be invalid then such invalid provision shall be severed and the remaining bylaw shall be maintained.

EFFECTIVE DATE

13. This bylaw becomes effective upon date of its third and final reading.

REPEAL

14. This bylaw is repealed at 11:59 PM Mountain Standard Time on December 31, 2020, but:

- a. A violation Ticket issued prior to the time of repeal remains valid and the person to whom the Violation Ticket was issued remains as fully liable to pay the specified penalty or to other legal process as the case may be, as though this bylaw had not been repealed; and

- b. An unpaid municipal violation tag issued prior to the time of repeal may result in issuance of a Violation Ticket after the time of repeal which will be as valid and enforceable as though this bylaw had not been repealed.

Read a first time this ____ day of _____, A.D. 2020.

Read a second time this ____ day of _____, A.D. 2020.

Read a third time and duly passed this ____ day of _____, A.D. 2020.

Janet Jabush
Mayor

Karen St. Martin
Chief Administrative Officer

LAC STE. ANNE COUNTY
PROVINCE OF ALBERTA
BYLAW # ___-___

Enhanced
status
not date.
temp lino

A Bylaw of Lac Ste. Anne County, in the Province of Alberta, to mandate the temporary use of masks or other facial coverings in all publicly accessed indoor spaces and public vehicles.

WHEREAS, Section 7 of the *Municipal Government Act*, RSA 2000, Chapter M-26, a Council of a Municipality may pass bylaws respecting:

- a) The safety, health and welfare of people and the protection of people and property,
- b) People, activities and things, in, on or near a public place or place that is open to the public, and
- c) Business, business activities and persons engaged in business;

WHEREAS, Section 8(a) of the *Municipal Government Act*, RSA 2000, Chapter M-26, further allows that Council may pass a bylaw to regulate an activity, and Section 9(b) further enhances the ability of Council to respond to present and future issues in their municipality;

WHEREAS, on March 11, 2020, the World Health Organization declared a global pandemic related to the novel coronavirus and the spread of COVID-19;

WHEREAS, the World Health Organization, the Chief Public Health Officer for Canada, and the Alberta Chief Medical Officer of Health, have identified face coverings as a method to limit the transmission of the COVID-19 virus in circumstances where physical distancing may not be possible;

AND WHEREAS, Council considers it appropriate to mandate the wearing of masks or other facial coverings in public places and public vehicles, subject to exceptions as set out in this bylaw;

NOW THEREFORE, the Council of Lac Ste. Anne County, in the Province of Alberta duly assembled, enacts as follows:

1.0 CITATION

This Bylaw may be referred to as the "Temporary Mandatory Facial Coverings Bylaw".

2.0 DEFINITIONS

2.1 In this Bylaw:

- a) "Bylaw Officer" means, a Bylaw Enforcement Officer appointed by Lac Ste. Anne County under Section 555 (1) of the *Municipal Government Act*, R.S.A. 2000, c. M-26;
- b) "Cohort" means small groups of people who limit close interactions to the same people within their group rather than switching daily contacts or engaging in close interactions with others outside that group;
- c) "Council" means the Council of Lac Ste. Anne County;

- d) "County" or "Lac Ste. Anne County" means the Municipality of Lac Ste. Anne County in the Province of Alberta;
- e) "County Manager" means the Chief Administrative Officer of Lac Ste. Anne County;
- f) "Director of Emergency Management" means the person appointed to the position of Director of Emergency Management for Lac Ste. Anne County, or their Deputy;
- g) "Face Covering" means a medical or non-medical mask or other facial covering that fully, and securely, covers the nose, mouth and chin as a barrier that limits the transmission of infectious respiratory droplets;
- h) "Peace Officer" means a person appointed as a Peace Officer under the *Peace Officer Act*;
- i) "Public Place" means any property, whether publicly or privately owned, to which members of the public have access as of right or by express or implied invitation, whether payment of any fee or not;
- j) "Public Vehicle" means any vehicle used for the transportation of people upon the payment of a fee;
- k) "Violation Ticket" means a ticket issued pursuant to the *Provincial Offences Procedure Act*, R.S.A. 2000, Chapter P-34 for a breach of any of the provisions of this Bylaw.

3.0 FACIAL COVERINGS

3.1 All persons must wear a Face Covering at all times while in an indoor, enclosed, or substantially enclosed Public Place or in a Public Vehicle.

4.0 EXCEPTIONS

4.1 Section 3.1 does not apply to:

- a) a child who is younger than two (2) years of age, or a child who is under five (5) years of age chronologically or developmentally, and who refuses to wear a Face Covering and cannot be persuaded to do so by their caregiver;
- b) persons who are unable to place, use or remove a Face Covering without assistance;
- c) persons unable to wear a Face Covering due to a mental or physical limitation or concern, or based on the protected grounds under the *Alberta Human Rights Act* RSA 2000, Chapter A-25.5;
- d) persons providing care or assistance to a person with a disability where a Face Covering would hinder that caregiving or assistance;
- e) a person who is hearing impaired, or communicating with a person who is hearing impaired, where the ability to see the mouth is essential for communication;
- f) a person who needs to temporarily remove their Face Covering, provided they are able to maintain a distance of at least two metres from any persons who are not members of the same household, or Cohort, for the purposes of:
 - i. receiving services that require the removal of their Face Covering,
 - ii. actively engaging in athletic or fitness activity in an establishment such as a sports facility, sports club, gym, yoga studio or other similar establishment,
 - iii. participating in a religious or spiritual ceremony,
 - iv. consuming food or drink, or
 - v. an emergency or medical purpose;
- g) persons providing or receiving a service that requires personal consultation if that activity occurs in a closed office or meeting room and all participants in the personal consultation are able to maintain physical separation of at least two metres from each other; and

- h) persons separated from others by physical barriers or shields such as plexiglass.
- 4.2 Section 3.1 does not apply to the following places:
 - a) schools and other educational facilities;
 - b) childcare facilities; or
 - c) hospitals and healthcare facilities.
- 4.3 A person who is employed by, or is an agent of, the operator of a Public Place, is not obligated to wear a Face Covering while:
 - a) in an area of the premises that is not designated for public access;
 - b) when located either within or behind a physical barrier; or
 - c) implementing physical distancing practices.
- 4.4 An operator of a Public Vehicle is not obligated to wear a Face Covering when located either within or behind a physical barrier.

5.0 VIOLATIONS, ENFORCEMENT AND PENALTIES

- 5.1 No person shall, in any manner, harass or attempt to intimidate a person who is not guilty of an offence while not wearing a Face covering as a result of any provision in Section 4.0.
- 5.2 A Bylaw Officer or Peace Officer is hereby authorized and empowered to issue a Violation Ticket to any Owner or Person whom that Officer has reasonable and probable grounds to believe has contravened any provision of this Bylaw.
- 5.3 Any person who hinders or obstructs a person lawfully carrying out the enforcement of this Bylaw is guilty of an offence.
- 5.4 Where a person contravenes any provision of this Bylaw, the specified penalty is prescribed in Schedule "A".
- 5.5 Where a Violation Ticket is issued pursuant to this Bylaw, the person to whom the Violation Ticket is issued may, in lieu of being prosecuted for the offence, pay the Violation Ticket as outlined on Schedule "A" hereto, provided that such payment is made in full on, or before, the date outlined on the Violation Ticket.
- 5.6 A Violation Ticket issued prior to the time of expiry of this Bylaw, remains valid and the person to whom the Violation Ticket was issued remains fully liable to pay the specified penalty, or to other legal process as the case may be, as though this Bylaw had not expired.
- 5.7 Nothing in this Bylaw relieves a person from complying with any federal or provincial law, regulation or order, court order, or any lawful permit or license.

6.0 ENACTMENT

- 6.1 The provisions of this Bylaw may only be enacted where required through a Public Health Order, or through recommendation from the Chief Medical Officer of Health for Alberta, upon such time that the Lac Ste. Anne County region is placed on an Enhanced Status.
- 6.2 The County Manager, or the Director of Emergency Management, or their designate(s), may enact the provisions of this Bylaw, advising the Emergency Advisory Committee immediately and prior to any public announcement being made.
- 6.3 Council may, by resolution, implement the provisions of this Bylaw at any time.

7.0 REVERSION

- 7.1 Where the provisions of this Bylaw have been enacted in accordance with Section 6, they may only be reverted as follows:
 - a) The Government of Alberta rescinds the Public Health Order;

- b) The Chief Medical Officer of Alberta makes the recommendation to remove the requirement for Face Coverings; or
- c) The Enhanced Status has been removed for the Lac Ste. Anne County region.

8.0 SEVERABILITY

8.1 Every provision of this Bylaw is independent of all other provisions and if any provision is declared invalid by a court, then the invalid provisions shall be severed, and the remainder provisions shall remain valid and enforceable.

EFFECTIVE DATE

This Bylaw shall come into force and effect on the date of the third and final reading and signing thereof.

**FIRST READING:
SECOND READING:
THIRD READING:**

REEVE

Date Signed: _____

COUNTY MANAGER

Date Signed: _____

BYLAW # _____

SCHEDULE "A"

| Section | Offence | 1 st Offence | 2 nd and Subsequent Offences |
|---------|---|-------------------------|---|
| 3.1 | Fail to wear a Face Covering where required. | \$100.00 | \$200.00 |
| 5.3 | Hinders or obstruct a person lawfully carrying out the enforcement of this Bylaw. | \$250.00 | \$500.00 |

LAC STE. ANNE COUNTY



RECEIVED
OCT 22 2020

56521 RGE RD 65 | BOX 219 | SANGUDO, ALBERTA T0E 2A0
PHONE: 780.785.3411 Ext. 3698 | TOLL-FREE: 1.866.890.5722 | FAX: 780.785.2985

October 19, 2020

Town of Onoway
Mayor
Box 540
Onoway Ab T0E 1V0

RECEIVED
OCT 22 2020

Care of: The Mayor

RE: Onoway Regional Medical Clinic Infrastructure Funding Request

As you are aware, on July 31, 2020, Lac Ste. Anne County purchased the property referred to as the Onoway Regional Medical Clinic, located at 4927 Lac Ste. Anne Trail South or 4927 50th Avenue, Onoway, Alberta.

On September 28, 2020, Lac Ste. Anne County started a renovation of Unit #3 to completely renovate and modernize this space to become part of the Onoway Regional Medical Clinic. These renovations will be completed and ready for use on January 4, 2020.

Please accept this as a formal request to have the members fund new exterior signage at the clinic.

Please provide an indication of your willingness to provide funding for these improvements to allow our administrations to work together and move forward with planning for these improvements to occur starting in March of 2021.

Best regards,

A handwritten signature in black ink, appearing to read "Joe Blakeman".

Joe Blakeman
Reeve, Lac Ste. Anne County

CC: County Council
CC: Mike Primeau, County Manager

(10)



October 19, 2020

Town of Onoway
4812 – 51 Street
Box 540
Onoway, AB
T0E 1V0

ATTN: Judy Tracy
Mayor, Town of Onoway

RE: Onoway Regional Medical Clinic Infrastructure Funding Request

As you are aware, on July 31, 2020, Lac Ste. Anne County purchased the property referred to as the Onoway Regional Medical Clinic, located at 4927 Lac Ste. Anne Trail South or 4927 50th Avenue, Onoway, Alberta.

On September 28, 2020, Lac Ste. Anne County started a renovation of Unit #3 to completely renovate and modernize this space to become part of the Onoway Regional Medical Clinic. These renovations will be completed and ready for use on January 4, 2020.

Please accept this as a formal request to fund the repairs to the asphalt parking lot.

Lac Ste. Anne County would also like to discuss the opportunity for the Town of Onoway to fund improvements to the infrastructure at the Onoway Community Hall to allow for overflow parking and potential pedestrian ramp or stairs to allow for pedestrian access directly from the Community Hall to the Onoway Regional Medical Clinic.

Please provide an indication of your willingness to provide funding for these improvements to allow our administrations to work together and move forward with planning for these improvements to occur starting in March of 2021.

Best regards,

Joe Blakeman
Reeve, Lac Ste. Anne County

CC: County Council
CC: Mike Primeau, County Manager

11

ONOWAY



Welcome to The Town of Onoway

Situated in the scenic Sturgeon River valley, the Town of Onoway with a population of 1,029, is located on gently rolling farmland in the southeast corner of Lac Ste. Anne County. Onoway provides a small-town country lifestyle, along with easy access to major urban centres.

The town is well positioned at the junction of Highways 43 and 37 and is approximately 50 km directly northwest of Edmonton and 35 km northwest of Spruce Grove. Being in the proximity of the outer commuter zone for the greater Edmonton metro region allows people to live in Onoway and enjoy the more affordable and quieter country lifestyle while working elsewhere.

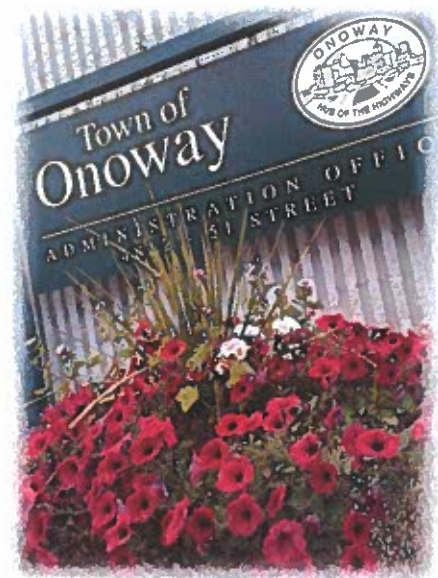
Likewise, the Town's proximity to the two highways also allows people to live elsewhere while being employed in Onoway. The greater connectivity of Onoway with Stony Plain, Spruce Grove, St. Albert and Edmonton has been good for the Town. It gives residents more options for work and recreation, and businesses have a greater potential market.

The community has deep roots as an agricultural community going back at least 100 years. The Town of Onoway, benefits from a local trading area of more than 16,000 with a large number of country residential subdivisions and summer villages in the area supporting its retail businesses and professional service sectors.

Onoway has become a small hub for the East Lac Ste. Anne region, providing vital education, health, retail, recreational and social services to residents of the town and surrounding rural areas.

Topography

Onoway is surrounded by an interesting landscape which is characterized by moderately rolling, hilly topography and big bodies of water. Glaciation left remnant meltwater channels, a number of lakes, rivers, sand and gravel beds, plus unique geological features throughout the County. The Buried Onoway Valley is an example of a buried-valley aquifer; it runs under Lake Isle and Lac Ste. Anne. It is the major source of groundwater for domestic consumption within the Onoway region. It is filled with abundant sand and gravel deposits.



Economic Indicators

Onoway has a large industrial base for a community of its size, including agricultural and oilfield services, manufacturing and fabricating, construction and environmental management. In addition to many new enterprises, the Town is home to a number of long-standing, successful, locally grown businesses.

Onoway's proximity to the greater Edmonton Metro Region is a great advantage for the community.

Manufacturing

Onoway has a strong **metal fabrication sector** led by Academy Fabricators Inc. Academy fabricates pipe spools and structural components for the oil sands, pipelines and energy sectors. Another local fabricator, Morand Industries Ltd. manufactures livestock handling equipment, gates, and custom pieces.

As a result of a vibrant agriculture sector, Onoway has a number of **value-added food manufacturers**.

For example, Alta Agri-Foods Ltd. provides manufacturing services for small food franchises.



Pocket House, is a CSA approved manufacturer that produces modern and contemporary Pocket Houses (Park Models and Modular Homes) and related structures. They are also able to provide off-grid options.

Atlas Growers is a Canadian medical cannabis producer. Their pharmaceutically viable cannabis flower and cannabis products are cultivated in a state-of-the-art, 38,000 square foot controlled-environment agricultural facility outside of Onoway.

Local manufacturers include

- Academy Fabricators Inc.
- Alta Agri-Foods Ltd.
- Atlas Growers
- Country Fresh Water
- Onoway Custom Packers 2014 Ltd.
- Morand Industries Ltd.
- Pocket House
- Wayfinder Corporation
- Woodhaven Cabinets
- XL Graphics



Construction

Onoway has a vibrant construction sector made up of both independent contractors and larger sized players. Tyschuk Construction Ltd. has been serving the region since 1946. Onoway's construction sector is driven by its proximity to the oil and gas sector, the metro Edmonton industrial region, aggregate resources, and the numerous residential and recreational properties in the area.

Aggregate

The Upper Athabasca land use region, in which Onoway is located, has a strong gravel supply. About 13% of provincial aggregates can be found within the Upper Athabasca region. Aggregate extraction in the region is strong.

Wayfinder Corporation recently opened its Big Molly Regional Sand Facility 30 km northwest of Onoway on Highway 43. Wayfinder produces high-quality regional frac sand including WaySAND, a high-quality regional frac sand that is a cost-effective alternative to Tier 1 frac sand.

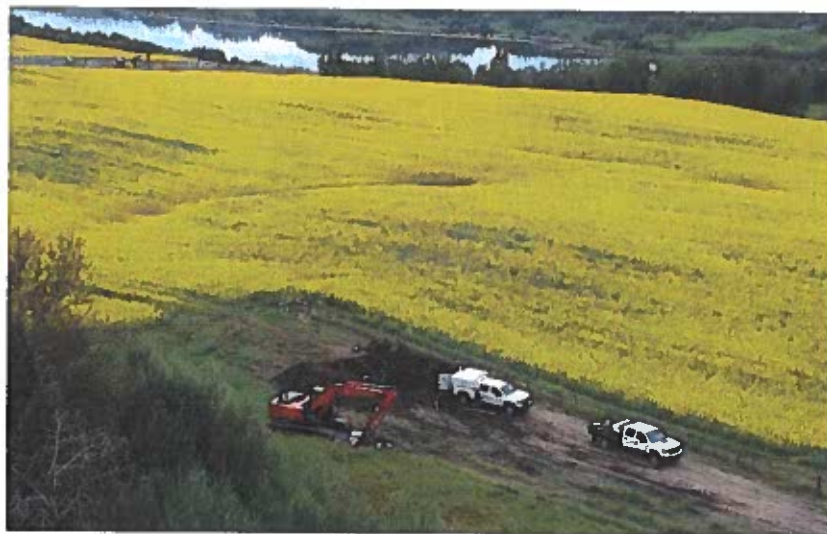


The facility is strategically located near the Duvernay Oil Play and to other strategic locations around the Western Canadian Sedimentary Basin.

Agriculture

Onoway has deep roots as an agricultural community. The Lac Ste. Anne Census Consolidated Subdivision has 1.7 times the density of horse farms; 1.5 times the density of cattle ranches; 1.5 times the density of other livestock; 1.6 times the density of floriculture; and 1.4 times the density of hay production.

The Town is an agricultural service centre for the region, and agriculture is a driver in value-added manufacturing.



Oil & Gas Service Sector

In addition to manufacturing and construction, Onoway has a number of other businesses that provide services to the oil and gas sector. For example, Tree Line Well Services Inc. operates their field base in Onoway. This location positions is strategically located for them to competitively perform work in the Edmonton, Edson, Drayton Valley, Athabasca and the Whitecourt corridor.

Halliburton Energy Services Liquid Mud Plant and Warehouse underwent a multimillion-dollar upgrade in 2015–2016. This complex in Onoway, Alberta, includes on-site retention, calibration of field testing equipment, and a dry-product central distribution warehouse.

Tourism / Recreation

Recreation plays an important part in the local economy, with both Lac Ste. Anne and a number of smaller lakes and natural areas in close proximity. The many lakes in the County provide year-round fishing opportunities, boating, swimming, and other water activities in the summer.

The Onoway Museum & Visitor Information really showcases the community and attracts people from afar. According to Trip Advisor, Tinkers Damn, a vintage store attached to Davlyn's Restaurant, is a hidden gem. Western Canada's longest running drop zone for skydiving is located at the Eden North Parachute School just south of Onoway.



Small Business

Onoway is full of entrepreneurship and interesting unique small businesses from Cottage Flair Woodworks (custom carpentry) to the Fuel Coffee Bar. Dosie Dotes & Greens specializes in eclectic assortment of gift giving ideas and The Paper Canvas Ltd. focuses on artistic ventures and geeky merchandise.

Onoway has a small cluster of automotive related businesses including Country Automotive, Grand Tire, Jack's Autobody which have been in the community for generations, and Vintage Steel - family owned and operated machinist and licensed mechanic that specializes in: Restorations, Metal Work, Custom Paint, and Upholstery including convertible tops.

Atlas Fire and Safety Equipment Ltd. is a fire suppression certification company that provides services and distributes fire and safety equipment all over the province.



Recent Investments and Projects

Value of Building Permits

| Year | Value of Building Permits | Number of Building Permits |
|------|---------------------------|----------------------------|
| 2018 | \$34.0 M | 143 |
| 2017 | \$64.0M | 203 |
| 2016 | \$23.0M | 105 |
| 2015 | \$28.0M | 79 |
| 2014 | \$29.4M | 132 |

Alberta Regional Dashboard

Business and Community Supports

| Organization | About |
|---|---|
| Onoway and District Chamber of Commerce | The Onoway & District Chamber of Commerce supports businesses and not-for-profits; while developing relationships within the greater Onoway community. www.onowaychamber.ca |
| Community Futures Yellowhead East (CFYE) | Funded by Western Economic Diversification Canada, CFYE provides small business services and business management tools for people wanting to start, expand, franchise or sell a business, plus specialized business programs. They actively work with community and business leaders to foster rural economic growth. www.yellowheadeast.albertacf.com |
| Partners in Progress | Partners in Progress is a partnership between the Town of Onoway and Lac Ste. Anne County that takes advantage of working together to enhance economic development opportunities in the region. The partnership developed an economic development roadmap "On Our Way to Endless Opportunity – An Economic Roadmap." Partners in Progress acknowledges the importance of supporting existing small business, and attracting new business. They have developed a unique website to support and promote local business with both an enhanced business directory, and information and resources to support / enhance business start-ups: www.shopthecounty.ca |

ShoptheCounty.ca

Onoway and Lac Ste. Anne County have teamed up on a directory designed to help local businesses get found by prospective customers.





Available Land and Property

Residential:

Onoway has a good supply of Supportive and Independent Living facilities for seniors thanks to the Lac Ste. Anne Foundation.

Independent Living Facilities

- Beaupré Court
- Seeley Manor

Supportive Living Facilities

Chateau Lac Ste. Anne

Commercial and Industrial Lots:

The potential exists to develop several sites in and around The Town of Onoway. The Town has 3 very large parcels of land zoned Urban Reserve, which are suitable for commercial/industrial/residential use along with many smaller lots within our existing Industrial area

The Town of Onoway and Lac Ste. Anne County commit to work with owners and developers to ensure timely processing and development of these future industrial sites.



Key Demographics

| Population Demographics (2016) | Onoway |
|---|--------|
| Population | 1,029 |
| Annual population growth rate (2011-16 trend) | -1.0% |
| Workforce population (age 15-64) | 650 |
| School population (age 5-17) | 193 |
| Senior Population (age 65+) | 180 |
| Number of dwellings | 355 |

Statistics Canada. 2016 Census



| Population Demographics (2016) | Onoway | Province of Alberta |
|--------------------------------------|----------|---------------------|
| Median age | 41.7 | 36.7 |
| Average individual employment income | \$57,502 | \$59,343 |
| Median household income | \$89,003 | \$93,835 |

Statistics Canada. 2016 Census

Key Employers

| Sector | Businesses | Sector | Businesses |
|--------------------------------|--|--------------------|--|
| Health Care & Education | <ul style="list-style-type: none"> Alberta Health Services Lac Ste. Anne Foundation Northern Gateway Public Schools | Public Services | <ul style="list-style-type: none"> Town of Onoway MLA Shane Getson, Constituency Office |
| Agriculture Related | <ul style="list-style-type: none"> Crop Management Network Inc. Onoway Veterinary Clinic | Hospitality | <ul style="list-style-type: none"> Onoway Inn & Suites Star Inn Motel Davlyns Restaurant Jade Garden |
| Agri-Processing | <ul style="list-style-type: none"> Onoway Custom Packers 2014 Ltd. Atlas Growers | Financial Services | <ul style="list-style-type: none"> ATB Financial CIBC |
| Fabricators | <ul style="list-style-type: none"> Academy Fabricators Inc. Morand Industries Ltd. | Retail | <ul style="list-style-type: none"> Bigway Foods Onoway Pharmacy Onoway Timber Mart |
| Industrial Sand Mining | <ul style="list-style-type: none"> Wayfinder Corporation | Utilities | <ul style="list-style-type: none"> EQUUS REA Ltd. Ste. Anne Natural Gas Co-op |
| Waste Management & Remediation | <ul style="list-style-type: none"> Calahoo Waste Disposal GFL Environmental Sandstone Vacuum Services Ltd. | Media | <ul style="list-style-type: none"> Lac Ste. Anne Bulletin Community Voice |



Workforce Statistics



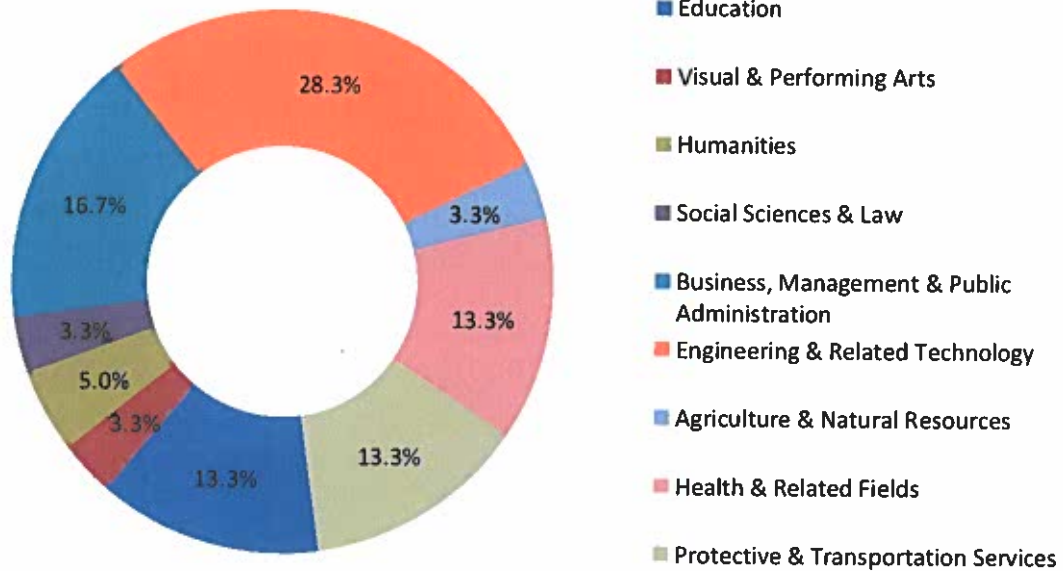
| Statistic (2016) | Onoway |
|--|--------|
| Workforce population (age 15-64) | 650 |
| Workforce participation rate | 63.9% |
| % of Workforce with no diploma or post-secondary | 26.6% |
| % of Workforce with high school diploma or equivalent | 32.9% |
| % of Workforce with post-secondary diploma, certificate, or degree | 41.3% |

Statistics Canada. 2016 Census

The region has a large competitive advantage in its number of certified trades people.

Statistics Canada. 2016 Census

Major Field of Study

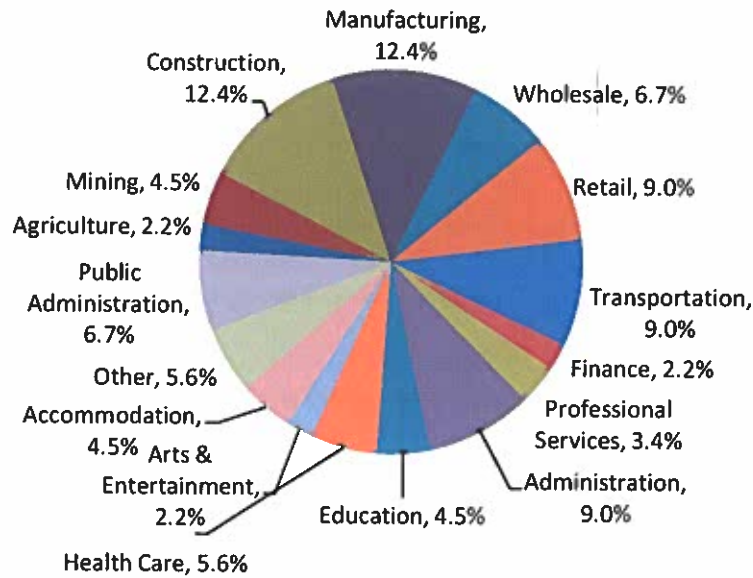


Statistics Canada. 2016 Census

Onoway has a high proportion of workers employed in construction, manufacturing, transportation & warehousing, waste management & remediation services, and wholesale trade.



Labour Force by Industry



Labour Force by Industry

| Statistic (2016) | Onoway | Alberta |
|--|--------|---------|
| Construction | 12.4% | 10.4% |
| Manufacturing | 12.4% | 5.6% |
| Retail Trade | 9.0% | 11.0% |
| Transportation & Warehousing | 9.0% | 5.1% |
| Waste Management & Remediation Services | 9.0% | 3.9% |
| Other | 7.8% | 8.4% |
| Public Administration | 6.7% | 5.4% |
| Wholesale Trade | 6.7% | 3.6% |
| Health Care & Social Assistance | 5.6% | 10.9% |
| Oil & Gas Extraction | 4.5% | 6.3% |
| Education | 4.5% | 6.5% |
| Accommodation & Food Services | 4.5% | 6.8% |
| Professional; Scientific, Technical Services | 3.4% | 7.4% |
| Agriculture, Forestry, Fishing & Hunting | 2.2% | 2.8% |
| Finance | 2.2% | 3.1% |

Statistics Canada. 2016 Census



Utility Providers

| Service | Provider |
|-------------------------|---|
| Natural Gas | ATCO Gas (services inside Town boundaries) Ste. Anne Natural Gas (SANG) Co-op Ltd. (services outside Town boundaries) |
| Electric Power | Fortis Alberta Inc. (services inside Town boundaries) EQUUS REA Ltd. (services outside Town boundaries) |
| Water Service Provider | The Town of Onoway has a water distribution system within the Town to which potable water is received from the WILD Water Commission. Outside of Town boundaries, there are various potable water truck fill stations constructed, or being constructed, by the WILD Water Commission to service those properties outside of Town of Onoway boundaries. |
| Waste Water | Sewage is piped to the sewage lagoon northeast of Onoway, along Highway 37. |
| Internet Providers | Telus; CCI Wireless; Xplornet |
| Solid Waste & Recycling | <p>The Town of Onoway has curbside pickup service for waste, organics and recycle being provided by Sandstone Waste Services. The Town also provides an annual “Let’s Get Spiffy” service for residents so they may do a major clean-up of their properties and have disposal services available.</p> <p>The Highway 43 East Waste Commission is a regional waste management services commission that works jointly with neighbouring municipalities in a regional cost-shared recycling program.</p> |

EQUUS REA Ltd.

EQUUS is a Rural Electrification Association (REA). They are the largest owned member utility in Canada. EQUUS provides quality, reliable electric distribution services to 11,800 members across 26 municipal districts and counties in rural Alberta.

Ste. Anne Natural Gas (SANG) Co-op Ltd.

SANG Co-op is the largest rural gas distribution system in Alberta. It was formed in 1972 to heat rural Albertan’s homes easily and more cost effectively. Today SANG services over 6700 natural gas members, has a service area of 3350 square kilometres, and maintains over 4500 kilometres of gas pipeline.



Municipal Taxes and Utilities

| Service | Rate |
|--------------------------------------|--|
| Property Tax: Residential / Farmland | 6.4872 (2019 mill rate) |
| Property Tax: Non-Residential | 17.4028 (2019 mill rate) |
| Water Commodity Charge - residential | \$5.60 per cubic metre; \$150/month (unmetered) |
| Water Commodity Charge - commercial | \$5.60 per cubic metre; \$500/month (unmetered) |
| WILD Water Phase I Debenture Charge | \$5.20 per month per customer |
| WILD Water Phase II Debenture Charge | \$3.30 per month per customer |
| Sewer Commodity Charge | \$1.44 per cubic metre or (\$25.00 / month if no water meter) |

Climate



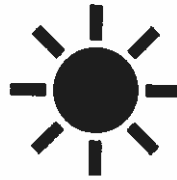
Average Yearly
Rainfall (mm)

544



Average Yearly
Snowfall (cm)

123



Highest Temperature
(Celsius)

30



Lowest Temperature
(Celsius)

-35

Environment Canada . Last Updated: December 2019



Transportation Infrastructure

The close proximity to Highways 37 and 43 give Onoway the opportunity to identify itself as "Hub of the Highways." The development of the Highways, and the increased speed and affordability of motor vehicle traffic, has allowed Onoway to enter the outer commuter zone for the greater Edmonton urban area. This allows people to live in Onoway and enjoy the country lifestyle while working elsewhere. The International Airport is only an hour away.

| Facility | Details |
|------------------------------|---|
| Highways | <ul style="list-style-type: none"> • Highway 43 – part of "The Canamex Trade Corridor" • Highway 37 • Secondary Highway: 777 • Just west of Onoway is Highway 33, the Grizzly Trail |
| Railways | <p>Class 1 Railroad:</p> <ul style="list-style-type: none"> • <u>CN Sangudo Subdivision</u>: CN Rail branch line from Edmonton to Kaybob near Fox Creek. Less than an hour from the Acheson Industrial Area and Rail Facility. • Both CN and CP railways operate intermodal container yards in Edmonton. |
| Municipal Airport | <p>Villeneuve Airport: (30 km from Onoway; located in Sturgeon County)</p> <ul style="list-style-type: none"> • Operated by Edmonton Airports • Two paved runways (3,500 ft x 100 ft, and 5,000ft x 100 ft) • NAV Canada Air Traffic Control Tower available • Over 60,000 aircraft landings and takeoffs per year |
| International Airport | <p>Edmonton International Airport: (90 km from Onoway)</p> <ul style="list-style-type: none"> • Serves over 6 million passengers annually. • Regularly scheduled flights to all major Canadian cities. • Direct flights to more than 50 global destinations. • Cargo services that are designed to expedite shipments to all parts of the globe quickly and cost effectively. |



Canamex Corridor / The Alaska Highway

The Corridor includes approximately 1,150 km of Alberta's provincial highway network, including parts of Highways 4, 3, 2, 216, 16, and 43, linking the Alberta/ Montana border crossing to the Alberta - British Columbia border on Highway 43. Highway 43 forms the northernmost portion of the CANAMEX Corridor and is the start of the "The Alaska Highway."

The Grizzly Trail

Alberta Provincial Highway 33 is commonly referred to as The Grizzly Trail. It follows the original Klondike Trail, which was advertised by Edmonton merchants as the shortest route to the Yukon during the Klondike Gold Rush.





In 2016/17, Onoway Junior Senior High School started classes in a state of the art Replacement School Building. This two story structure has a Career and Technology Studies (CTS) wing supporting mechanics, construction, art, cosmetology and technology. The school has an amazing double gym with a walking track above, as well as a fitness room facility. There is a large central atrium with natural light, inviting students to gather, visit and work or grab a lunch from the kitchen. The second floor houses a Learning Commons, and associated student run cafe.

Education

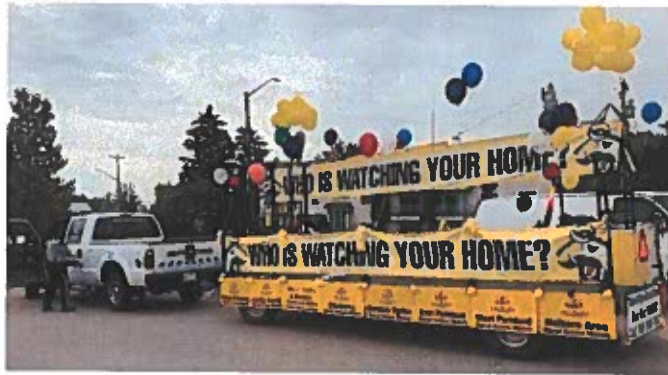
Onoway is home to two very active and high performing schools that together educate over 1,000 students each year. Northern Gateway Public Schools provides primary and secondary education to schools throughout the County.

| School | Grades Taught |
|-------------------|---------------|
| Onoway Elementary | K to 7 |
| Onoway Jr/Sr High | 8 to 12 |

Early Childhood Development

The Onoway Playschool is a program for 3-4 year olds with an emphasis on a positive social environment.





Health Care and Emergency Services

| Facility | Details |
|-------------------------------------|---|
| Police | The Town of Onoway and surrounding area receive RCMP service from the Parkland Detachment (located in Spruce Grove), and the Onoway High School currently share an Enhanced RCMP officer with another high school. The Town of Onoway also receives Community Peace Officer services through a contract with Lac Ste. Anne County. |
| Fire | The Town of Onoway, along with 9 other urban municipalities, receive their Fire Services from Onoway Regional Fire Services which is a hybrid fire service that includes medical first response enhancing the fire service provision with the greater Onoway region. |
| Ambulance | Parkland Ambulance Authority serves Onoway and area with advanced life support service. |
| Onoway Medical Clinic | Co-operated by six municipal partners (the Town of Onoway; Lac Ste. Anne County; and the Summer Villages of Ross Haven, West Cove, Silver Sands and Val Quentin). Has recently undergone an expansion and renovation of its facility to enhance the capacity of the clinic to service regional communities; and to accommodate an additional doctor. This facility currently has 3 doctors and is proud to announce the recent hiring its first female physician. |
| Hospitals and Emergency Care | Westview Health Centre, at Stony Plain provides acute care, continuing care, 24-hour emergency services, diagnostic imaging, lab services, day surgery, public health, environmental health, community care, rehabilitation services, preventative dental health and mental health. Sturgeon Hospital in St. Albert and Barrhead Hospital also provide services to the community. |
| Other Services | Onoway Health Care Pharmacy Onoway Dental Clinic Lac Ste Anne Denture Clinic Onoway Chiropractic Office Onoway Community Health Services Alberta Health Services – Onoway Administration Building Onoway Mental Health Clinic |

Northwest Fire Rescue and Training is a private fire service that provides sentry and safety service's for energy companies while they drill, frac, and service wells.

Their Training Institute in Onoway provides real life, hands-on experience by way of offering students the opportunity to serve within a fully functional fire department.



Recreation and Community Groups

Numerous community associations and clubs help operate community facilities, host special events and festivals throughout the region, and much more.

Onoway Beautification Committee
Onoway & District Agricultural Society
Onoway Curling Club
Onoway Girl Guides Program
Onoway Ball and Soccer Association
Onoway Minor Hockey
1st Onoway Scouts
Onoway Skating Club
Onoway Golden Club

Onoway Facility Enhancement Association
Onoway & District Historical Guild
Onoway & District Fish and Game Association and Gun Club
Onoway Royal Canadian Legion Branch #132
3053 (Lac Ste Anne) Royal Canadian Army Cadet Corps
Silent River Kung Fu

The East End Bus Society is a cooperative effort of Lac Ste. Anne County, the Town of Onoway and the Village of Alberta Beach to provide affordable transportation for seniors and handicapped. The ten Summer Villages of Yellowstone, South View, Silversands, Val Quentin, Sunset Point, Sunrise Beach, Birch Cove, West Cove, Nakamun Park and Ross Haven also provide financial support.

Services include scheduled shopping/medical trips to West Edmonton Mall, and Spruce Grove plus excursion and rentals by service clubs, special interest groups and community members.

Churches

- Onoway Baptist Church
- Onoway Evangelical Free Church
- Onoway Seventh Day Adventist Church
- St. John's Anglican Church
- St. Rose of Lima Catholic Parish
- New Life Christian Community



The Onoway United Church runs a community Thrift Shop



SnoMo Days at Alberta Beach is an Alberta Winter Festival, dedicated to supporting motorized and non-motorized winter sports, and family orientated winter leisure activities.

Numb Bum 24 Hour The Pembina Dirt Riders Association are host the longest and coldest motorcycle/ATV ice race in the world on Sandy Lake each February.



<< Insert Special Profiles Highlighting >>

Onoway Heritage Centre and Museum

The former Onoway Elementary School is now a multi-use facility with numerous classrooms, a commercial kitchen, gymnasium, and other areas available to the community to enable clubs, organizations, families and instructors to provide opportunities for learning, self-improvement, group events and more.

This first rate museum is a Recognized Museum Program (RMP) with the Alberta Museum's Association.

The Foundry

The Foundry Youth ,Family and Community Center is the result of countless volunteer hours refurbishing an old building for community use.



Community and Recreational Amenities

Onoway has great community and recreational amenities.

| Facility | Details |
|---|---|
| Parks | Bretzlaff Park Dog Park Elks Park Kids Corner Ruth Cust Park Shaul Park |
| Swede Moren Park | This ball park has 3 diamonds on it and is located behind the Onoway Elementary and High Schools. The project was a joint venture of the Town of Onoway, Lac Ste. Anne County, the County of Lac Ste. Anne Board of Education, Onoway Ball Association, and Recreation, Parks and Wildlife Foundations. The park was named in recognition of Bror Moren, a ballplayer, who donated the land. |
| Onoway Arena | Operated by the Ag Society. Includes kitchen, arena and meeting area. Ice surface in season and cement surface in off-season. |
| Onoway Heritage Centre | The former Onoway Elementary School is now a multi-use facility with numerous classrooms, a commercial kitchen, gymnasium, and other areas available to the community to enable clubs, organizations, families and instructors to provide opportunities for learning, self-improvement, group events and more. |
| Onoway Fish and Game Association Gun Range | A 100 yard target range, a 50 yard pistol range, a shotgun trap and a 20 yard archery range. The range is equipped with facilities for archery, trap shooting, rifle and small bore firearms. Ranges are government inspected and approved, meeting or exceeding current safety standards. An education centre is also on-site for club meetings, conservation education, and youth organizations. |
| Imrie Park | Located east of Onoway on the shores of Devil's Lake just south of Highway 37 on Range Road 15, Imrie Park is a 216 acre park with 7 km of groomed trails and natural habitat viewing area as well as camping, day use and group use facilities. Includes 18 camping spots, a cookhouse, an enclosed picnic shelter, and a day use area. The Onoway Fish & Game Association manages this facility. |
| Onoway Community Hall | Located at 4920 49 Avenue and operated by the Onoway Facility Enhancement Association, the hall is a 2 story facility for rental. It includes a full kitchen and an elevator. |
| Onoway Legion | Open to the public. Includes pool, shuffleboard, darts, cards and other activities. |
| Onoway Public Library | Located in the Onoway Heritage Centre (former elementary school), the Library includes a program room as well as comfortable spaces for library users of all ages. |



Area Attractions

| Attraction | Details |
|--|---|
| Onoway Museum & Visitor Information | Located in the old Beaupré School – a two-room brick school built in 1921. Exhibits tell the story of the founding, settlement, and development of this part of north-central Alberta. Operated by the Onoway and District Historical Guild. |
| Salter's Lake | This small nutrient rich lake is Onoway's local fishing lake. It is open to the public all year round. The lake is stocked each spring and fall with rainbow trout by Alberta Sustainable Resource Development. Amenities include: a small parking lot, an outhouse, a small picnic area, boat launch and pier for public use. Boats with electric motors only are allowed. Maintained by the Onoway Fish and Game Association. |
| Lake Matchayaw / Devil's Lake | This lake is fed by the Sturgeon River, and is home to several fish species including burbot, lake whitefish, northern pike, walleye, and yellow perch. |
| Bilby Natural Area | 126 ha protected site southeast of Onoway contains gently rolling upland, covered by deciduous or mixedwood forest. Kilini Creek is a major feature in the northwest part of the natural area. A 4 kilometre loop hiking trail |
| Lac Ste. Anne Mission | A national historic site; it was the first permanent Catholic mission west of Winnipeg. It is part of a world-renowned pilgrimage site on the southern shores of Lac Ste. Anne. Other sacred buildings are found on the site. |
| George Pegg Garden | The province's first declared historic resource and is a protected site. Named after pioneer botanist/taxonomist George Pegg. Managed by the George Pegg Botanic Garden Society and hosts a variety of events for the public in the spring, summer and fall. |

Lac Ste Anne Pilgrimage

Lac Ste. Anne was first called Wakamne or God's Lake by the Alexis Nakota Sioux Nation who live on the west end of the Lake and Manito Sakhahigan or Spirit Lake by the Cree. The lake is the site of the annual Lac St. Anne Pilgrimage, one of the most unique and memorable spiritual gatherings in North America. This annual pilgrimage began over a hundred years ago.



Activities

| Activity / Attraction | Details |
|------------------------------------|--|
| Eden North Parachute School | Skydiving south of Onoway. Western Canadas longest running drop zone. |
| Devils Lake MX | A privately owned and run motocross race facility on 320 acres of land by Devils Lake. Includes: 2 separate race tracks and 1 mini track. Holds 5 sanctioned events per year plus a race school. |
| Renewal & Wellness Riding Centre | A therapeutic riding program for children with needs, located south of Onoway. |
| Memory Lane Campground | An eco-friendly campground near Onoway. Built with local materials by local tradespeople, featuring low-profile campground roads, a recycling program, and a natural woodland walking trail. |
| Kacikewin RV Campground and Cabins | "Kacikewin" is the Cree word for hideaway. Located at Alberta Beach. Offers seasonal camping and cabin rentals. |
| Gunn Campground | Located on the north shores of Lac Ste. Anne just north of the Gunn general store. |
| Sangudo Speedway | Located in the Pembina River Valley, this 3/8 mile dirt race track holds races in classes such as: mini stock, street stock and truck racing. |
| Alberta Beach Golf Resort | A new 18-hole, par 72 golf course with a fully serviced RV site. |
| Rich Valley RV and Golf Resort | 9 hole, 3150 yard, par 36 golf course with expansive rolling fairways, and an RV resort. Located along Majeau Lake. |
| Killdeer Beach Resort | 10 treed acres of seasonal RV camping along Lac La Nonne's lakefront. |
| Willow Bend Resort | A luxurious RV resort exclusive to long-term tenants. The resort offers guests a permanent lakeside location at Lac La Nonne for their RV. |
| Lakeview Campground | Located across from the shores of Lac Ste. Anne, the resort has over 400 fully serviced RV sites with power, water and sewer. Local amenities include: mini golf course, playgrounds, slip-n-slide, and jumping pillow. |
| Homer's Huts | Serviced and non-serviced camping sites, 2 motel rooms and 5 winterized cabins plus a coffee and gift shop located at Lac Ste. Anne. |
| Camp Nakamun | A summer camp that hosts kids, youth, and family camps in the summer and a year-round retreat destination. Located on the north side of Lake Nakamun. |
| Camp Warwa | Located on a 23 acre site on Lac Ste. Anne, near Darwell. The camp offers year-round outdoor education programs for schools and groups, summer camps, day camps, family camps, spring break camps and leadership programs. |





4812 - 51 Street Box 540 | Onoway, AB | T0E 1V0

Onoway.ca

Contact: Wendy Wildman, CAO
Ph: 780.967.5338 | Email: cao@onoway.ca

 /Town-of-Onoway

32