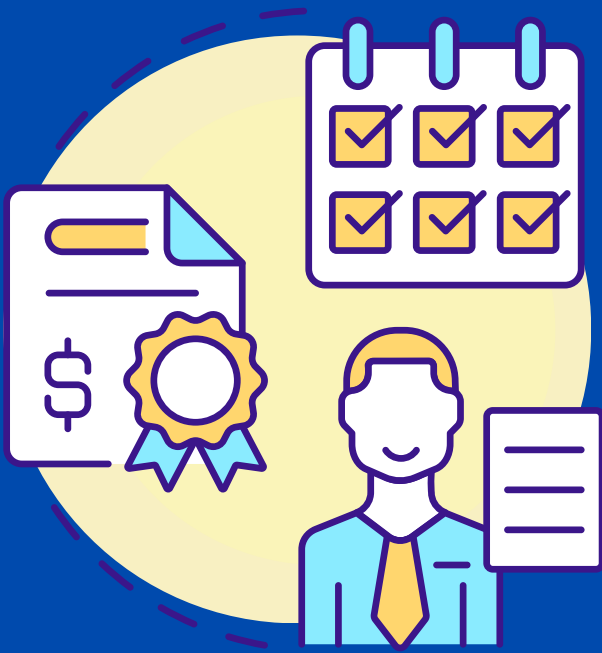


Utility Rate Changes

The average utility account owner consuming 11 cubic meters of water per month with a 5/8 water metre, will experience an approximate increase of \$2.51 on their monthly utility charges as a result of an increase in the water rate, and a decrease in the Regional Water Debenture.

SANITARY SEWER

\$ 38.89 PER MONTH
NO INCREASE



REGIONAL WATER DEBENTURE

\$ 14.67 PER MONTH
NO INCREASE

SOLID WASTE & RECYLCE FEE

\$20.66 PER MONTH
\$1.04 INCREASE



WATER

\$82.88 PER MONTH
INCREASE OF \$2.86
DUE TO REGIONAL WATER RATE
INCREASE. OFFSET BY DECREASE
IN REGIONAL WATER DEBENTURE



The increase is necessary to respond to a recent rate increase of \$0.26/m³ to the cost of purchasing water from WILD Water Commission. The Town received notice of this increase in early December. In order to sustain a balanced budget, we must transfer this increase to utility account holders.